



Hawthorn, Knockglass Road, Dunbeath, KW6 6EQ

Offers Over £185,000





Hawthorn Hawthorn

Dunbeath, KW6 6EQ

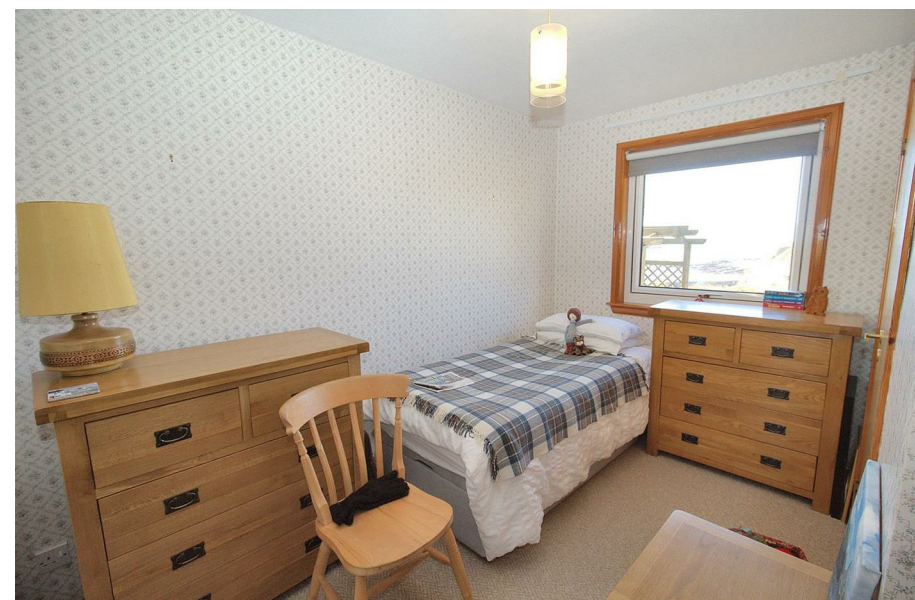
- Beautiful Two bedroom coastal bungalow
- LPG Central heating & Double Glazing throughout
- Single garage with power & light
- Home report can be found on K Allan Properties website
- Open countryside and amazing sea views
- Large well maintained garden with parking for several vehicles
- Wooden shed converted into a craft room with power & light

This charming two bedroom, detached bungalow offers breathtaking countryside and coastal views. The property is beautifully positioned, overlooking Dunbeath bay from various vantage points throughout the property. In good decorative order, the accommodation comprises of an entrance vestibule, hallway, lounge, kitchen/diner, two bedrooms and shower room. As you enter, you are welcomed into a spacious reception room that has a feature stone fireplace with a gas fire and a large lounge window that enjoys the spectacular countryside and sea views. The large kitchen comprises wall and base units with a stainless steel sink and drainer, double oven, ceramic hob, and cooker hood.



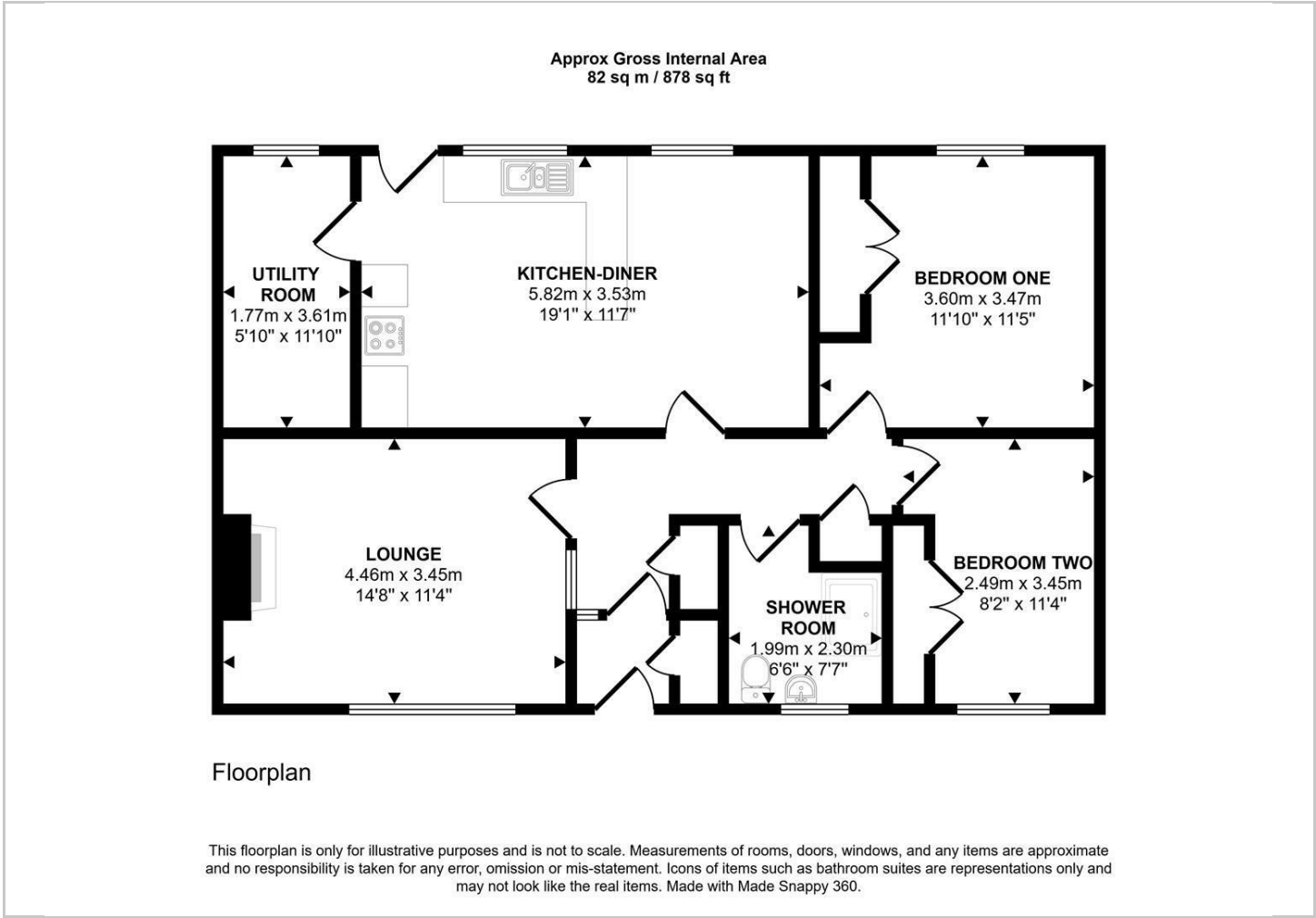


Directions





Floor Plans

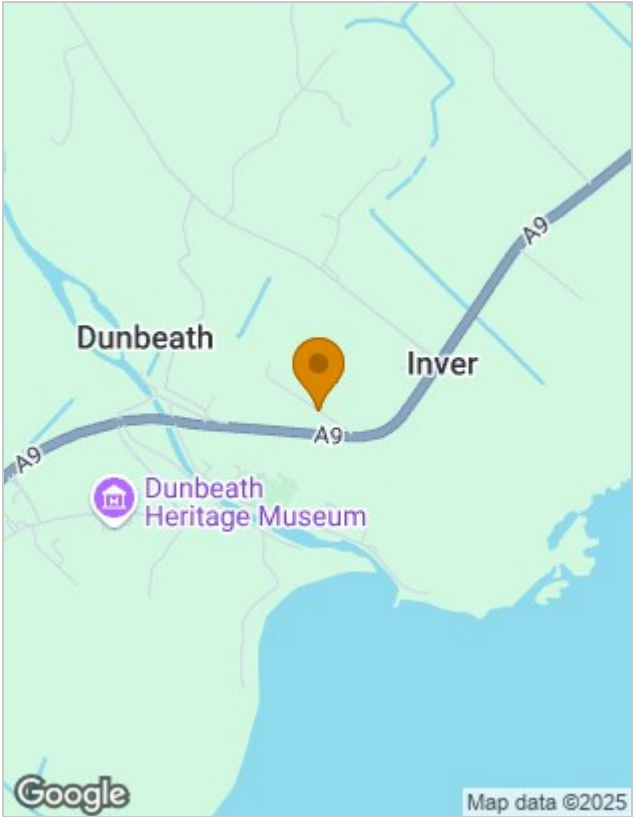


Viewing

Please contact our K Allan Properties Office on 01856 876377 if you wish to arrange a viewing appointment for this property or require further information.

The particulars are set out as a general outline only for the guidance of intended purchasers or lessees, and do not constitute, any part of a contract. Nothing in these particulars shall be deemed to be a statement that the property is in good structural condition or otherwise nor that any of the services, appliances, equipment or facilities are in good working order. Purchasers should satisfy themselves of this prior to purchasing.

Location Map



Energy Performance Graph

